

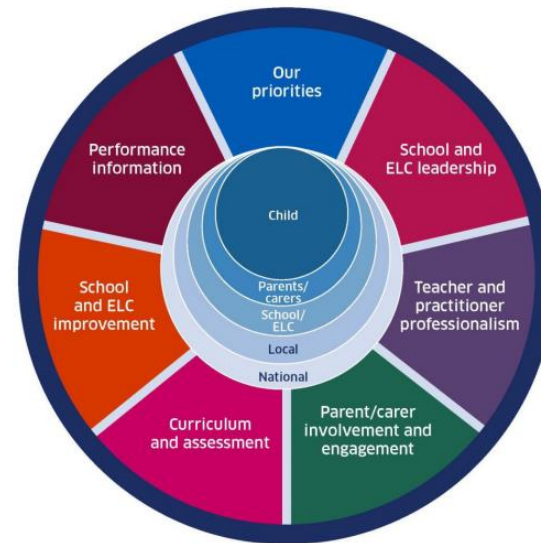
Education and Learning Directorate

School/ELC Annual School Improvement Planning

2024-2025



**Wallace Hall Academy,
Primary & ELC**
"Together we grow, learn and achieve"



School: Wallace Hall Primary

Date: 2024-25

SCHOOL IMPROVEMENT PLAN 2024 – 2025: Priority/Improvement Area

(Limit the number of priorities to ensure they are manageable and achievable.)

School Priority Improvement Area	Outcomes for Learners/School Community	Key Tasks
<p>Wallace Hall Primary Priority Area 1: Literacy</p>	<ul style="list-style-type: none"> To continue to develop and embed our approaches to literacy, with a particular focus on listening and talking. To further develop our approaches to feedback and target setting to ensure consistency of approach across the school. 	<p>To develop a detailed 2-18 literacy plan which links the four aspects of literacy and ensures clear progression across the 2-18 campus.</p> <p>Reading</p> <ul style="list-style-type: none"> To create reading targets from early to second level. To work towards the next level of the Reading Schools Award. Enhance the library's provision to include a broader range of genres and more diverse and inclusive content. To build on current good practice with Accelerated Reading to ensure consistent use across P4-7. <p>Writing</p> <ul style="list-style-type: none"> To review and refine the text types overview. All classes to do Tools for Writing in term 1, possibly alongside descriptive and recounts, then start other text types from term 2. Moderation of writing across CfE levels. <p>Listening and Talking</p> <ul style="list-style-type: none"> To introduce new D&G Frameworks for Listening and Talking (when complete) Create targets for listening and talking from early to second level. <p>Family learning</p> <ul style="list-style-type: none"> Parent information evenings on various parts of Literacy (Phonics, AR, reading comprehension)

NIF Priority		NIF Driver		HGIOS4 QIs/National Standard Criteria			
<ul style="list-style-type: none"> Placing the human rights and needs of every child and young person at the centre of education Closing the attainment gap between the most and least disadvantaged children and young people Improvement in skills and sustained, positive school-leaver destinations for all young people Improvement in attainment, particularly in literacy. 		<ul style="list-style-type: none"> School and ELC leadership Teacher and practitioner professionalism Parent/carer involvement and engagement Curriculum and assessment School and ELC improvement Performance information 		<p>1.3 Leadership of change 2.2 Curriculum 3.2 Raising attainment and achievement</p>			
Responsible/Lead Person		Time Allocations		Funding – including PEF		Expected Completion Date	
HT/ DHT		Collegiate sessions		PEF LA 3 days a week		May 2025	
Parental and Learner Engagement Opportunities				Linkage to Framework for Inclusion			
<ul style="list-style-type: none"> Family learning opportunities in school Family volunteer opportunities linked to the library and reading 				<ul style="list-style-type: none"> Continue to promote and develop Social Justice across the school community. Reflecting on and developing your inclusive practice Identifying issues to be solved Engaging with the Framework questions 			

School Priority /Improvement Area	Outcomes for Learners/School Community	Key Tasks
Wallace Hall Primary Priority Area 2: Numeracy	<ul style="list-style-type: none"> To continue to refine and embed our numeracy and maths procedures. 	<p>Beyond Number</p> <ul style="list-style-type: none"> To evaluate the delivery and impact of the Beyond Number Framework Create targets for early and second level <p>DNK</p> <ul style="list-style-type: none"> Review the target sheets and planning sheets to ensure they match up. Review fractions targets. <p>Assessment</p> <ul style="list-style-type: none"> Review DNK assessments Evaluate use of SOFA Maths assessments, and interrogate the data produced. Dyscalculia – ASfL to share how to gather appropriate evidence and consider an assessment tool for this. <p>Family Learning</p> <ul style="list-style-type: none"> Offer parent information session for Maths, DNK, Beyond Number
NIF Priority	NIF Driver	HGios4 QIs/National Standard Criteria
<ul style="list-style-type: none"> Placing the human rights and needs of every child and young person at the centre of education Closing the attainment gap between the most and least disadvantaged children and young people Improvement in skills and sustained, positive school-leaver destinations for all young people Improvement in attainment, particularly in numeracy. 	<ul style="list-style-type: none"> School and ELC leadership Teacher and practitioner professionalism Parent/carer involvement and engagement Curriculum and assessment School and ELC improvement Performance information 	<p>1.3 Leadership of change</p> <p>2.2 Curriculum</p> <p>3.2 Raising attainment and achievement</p>

Responsible/Lead Person	Time Allocations	Funding – including PEF	Expected Completion Date
HT/ DHT	Collegiate sessions	PEF Learning Assistant 3 days a week Times Tables Rockstars - PEF	May 2025
Parental and Learner Engagement Opportunities		Linkage to Framework for Inclusion	
Through Maths bags at Early and First Level Parents will engage with their children's learning.		<ul style="list-style-type: none"> • Continue to promote and develop Social Justice across the school community. • Reflecting on and developing your inclusive practice • Identifying issues to be solved • Engaging with the Framework questions 	

School Priority /Improvement Area	Outcomes for Learners/School Community	Key Tasks
<p>Wallace Hall Primary Priority Area 3 – Building Better Relationships (Rights, Meta-skills, Family Learning, Play)</p>	<ul style="list-style-type: none"> • To continue to work towards achieving the Gold Rights Respecting Schools Award. • To build awareness and understanding of meta skills. • To extend our family learning opportunities across the school to increase parental engagement and involvement in their child’s learning. • To continue to enhance our play provision and environment. 	<p>To review and develop our IDL bundles to include rights, Meta skills, family learning.</p> <p>Rights</p> <ul style="list-style-type: none"> • To roll over the Rights Squad to ensure momentum is maintained prior to Gold Accreditation. • To continue work on campaign. • To clarify the expectations on linking the UNCRC articles to planning documents. <p>Meta-skills</p> <ul style="list-style-type: none"> • To create more opportunities for meta-skills development across the school. • To visit other schools in D&G and beyond to learn from good practice. <p>Family learning</p> <ul style="list-style-type: none"> • To extend the current family learning opportunities across the school and build on current good practice. • To return to class assemblies with parents/carers being invited in for these. <p>Play</p> <ul style="list-style-type: none"> • To evaluate the current play practice and consider if extending the play culture to P3 will best meet the needs of that cohort of learners. • To investigate the impact of introducing play on our attainment. • To develop our environment for play, including the outdoor area. • Explore the use of outdoor spaces including the school orchard.

NIF Priority		NIF Driver		HGIOS 4 QIs/National Standard Criteria			
<ul style="list-style-type: none"> Placing the human rights and needs of every child and young person at the centre of education Improvement in children and young people’s health and wellbeing Improvement in skills and sustained, positive school-leaver destinations for all young people Improvement in attainment. 		<ul style="list-style-type: none"> School and ELC leadership Teacher and practitioner professionalism Parent/carer involvement and engagement Curriculum and assessment School and ELC improvement Performance information 		<p>2.5 Family learning 2.7 Partnerships 3.1 Ensuring wellbeing, equality and inclusion</p>			
Responsible/Lead Person		Time Allocations		Funding – including PEF		Expected Completion Date	
HT/ DHT		Collegiate sessions Parent council meeting held monthly throughout 2024-25		Roots of Empathy – PEF		May 2025	
Parental and Learner Engagement Opportunities				Linkage to Framework for Inclusion			
<ul style="list-style-type: none"> Engage with Families on RRS Family learning sessions throughout the year Family information session and opportunities for stay and play 				<ul style="list-style-type: none"> Continue to promote and develop Social Justice across the school community. Reflecting on and developing your inclusive practice Identifying issues to be solved Engaging with the Framework questions 			

School Priority /Improvement Area	Outcomes for Learners/School Community	Key Tasks	
Wallace Hall Primary Priority Area 4 – Digital Literacy	<ul style="list-style-type: none"> To develop and enhance the digital literacy skills of both staff and pupils. 	<ul style="list-style-type: none"> Digital literacy target in PRDi Start Digital Schools Award Other staff to join Digital Leaders working group Create a progression of skills Digital training for LA's Investigate other options other than Microsoft Educator for mid skills teaching staff. 	
NIF Priority	NIF Driver	HGIOS 4 QIs/National Standard Criteria	
<ul style="list-style-type: none"> Placing the human rights and needs of every child and young person at the centre of education Improvement in children and young people's health and wellbeing Closing the attainment gap between the most and least disadvantaged children and young people Improvement in skills and sustained, positive school-leaver destinations for all young people Improvement in attainment, particularly in literacy and numeracy. 	<ul style="list-style-type: none"> School and ELC leadership Teacher and practitioner professionalism Parent/carer involvement and engagement Curriculum and assessment School and ELC improvement Performance information 	1.3 Leadership of change 2.2 Curriculum 3.2 Raising attainment and achievement 3.3 Increasing Creativity and Employability:	
Responsible/Lead Person	Time Allocations	Funding – including PEF	Expected Completion Date
HT/DHT/Digital Leaders	Collegiate sessions Digital Leaders have time for development. INSET time that can be used.	Additional ICT equipment – PEF Cluster budget or/and Cluster Digital Leader budget to release staff	May 2025

Parental and Learner Engagement Opportunities	Linkage to Framework for Inclusion
<ul style="list-style-type: none"> • Continue to engage with parents on Digital Platforms • Support and develop homework on parental app/learning journal style • Links to wider national ICT news and opportunities via Dojo/Social Media 	<ul style="list-style-type: none"> • Reflecting on and developing our inclusive practice • Identify issue/problem and work to resolve issue/problem • Engaging with the NFI questions, including developing and expertise in digital literacy • Engaging with the inclusion team